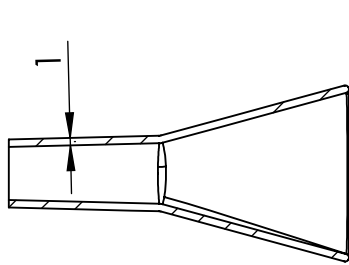
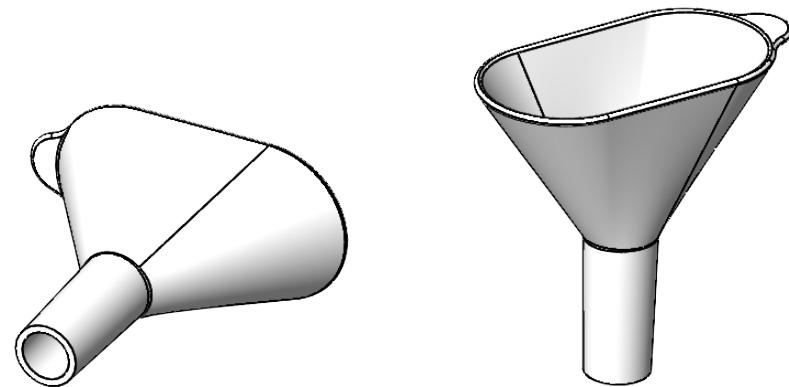
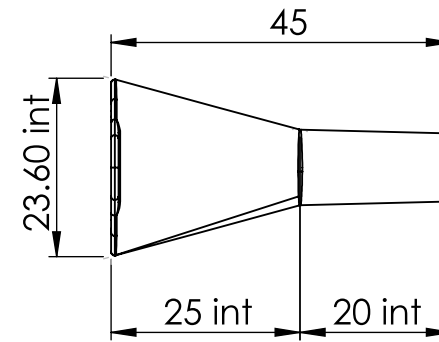
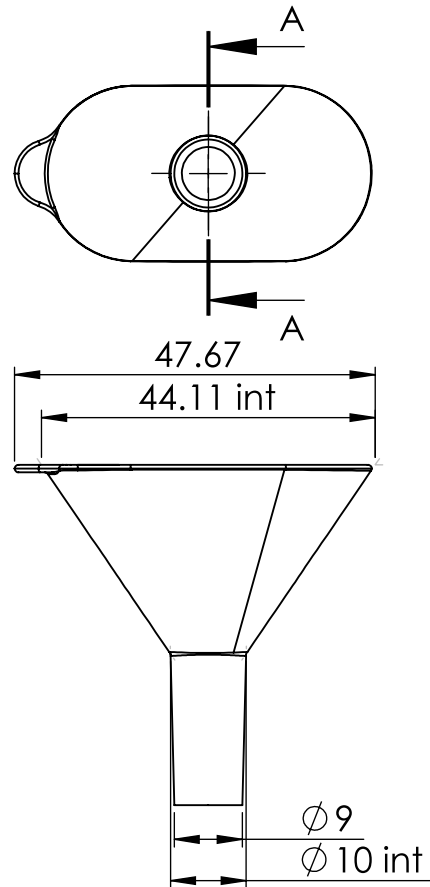


NOTES :-

1. This drawing is supported by 3D CAD which defines the nominal part geometry
2. Drawing for reference only
3. All dimensions shown on this drawing are critical as they affect form, fit and function of this part at assembly
4. All dimensions shown will be inspected and documented in an initial sample inspection report (ISIR)
5. DFM will be sent to confirm feed point, parting line and ejection pin positions, TBC before tooling manufacture
6. Supplied part will be free of burrs, flash & surface contamination
7. Draft angle as supplied by CAD geometry
8. R0.20 max permitted on the core side edges & fillets
9. All ejection pin marks will be sub flush to 0.15mm
10. Add part number and issue number and material specification in area indicated
11. Part number and recycle logo to be agreed at DFM stage
12. Material : - PP Homopolymer
13. Colour : - Natural
14. Finish : - Polish 1000 grit
15. Part Weight : -2.29grams



SECTION A-A



Dimensions in MM